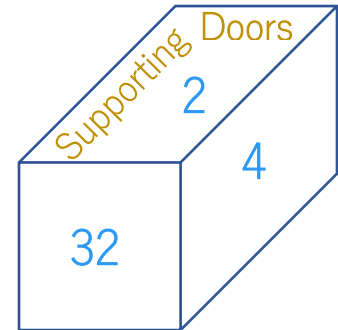


It exerts a computerized control that is well organized to access the resources (Building, Small Area or Room in building, Assets in a building etc.). It acts as a medium between operator and Hardware (Controller). Its core functionality is to send the commands, instructions, requests and data to controller and receive the response/logs from controller and notify the same to operator.

AccessSoft is a comprehensive access control management system designed to provide a user-friendly environment to configure the controller, readers, schedules and access levels, and several ACS features.



## AccessSoft Modules

### Master Module

It allows user to create company profile, personnel details and other relevant information such as department, designation, employee status etc...

### Card Management

As the name implies it is used to enroll the card credentials. It supports all type of HID card formats including standard 32-bit format (Mifare) and custom formats.

### Alarms & Event Management

It notifies operator by displaying all the events and alarms occurred in real-time, it also displays card holder details along with photo for enrolled cards. It facilitates an interface to design the floor plan as well as to view the events in accordance with the floor plan.

### System Module

It is used to create system users, assign user rights, department level access, database backup/restore and other configurations.

### Access Group Management

Access group is the core part of access control system which allows user to define the door groups and schedules where door group comprises of one or more doors. Permutation and combination of door groups and schedule will form the access group.

### Device Management

It provides an easy interface to configure the controller, reader interfaces, readers and IO device interfaces.

# AccessSoft Features

**Card Formats:** Supports all type of HID card formats including standard 32-bit format and custom formats. It also provides the following credential settings.

- SET ESCORT ID (TO ESCORT VISITOR)
- SET CARD EXPIRY DATE
- ACTIVATE/DE-ACTIVATE CARD
- SUPPORT OF VARIOUS CARD FORMATS (HID/CUSTOM)

**Door Management:** Provides an interface to configure door details such as

- ACCESS GRANT TIME
- EXTENDED ACCESS GRANT TIME
- ANTI-PASSBACK SETTING
- CICO/CIFO SETTINGS (ONE AND 2 DOOR CONTROL)
- DOOR FORCED ALARM
- DOOR HELD OPEN ALARM

**Access Types:** Supports various access methods such as

- CARD ONLY
- CARD OR PIN
- CARD AND PIN
- PIN ONLY

**Access Methods:** It provides a rich interface to alert operator about the events/alarms occurred in real time.

- ACCESS GRANT OR DENY
- CARD OR PIN NOT FOUND
- ACCESS DENIED DOOR GROUP/SCHEDULE
- DOOR FORCED ALARM
- DOOR HELD OPEN
- CARD HOLDER DETAILS ALONG WITH PHOTO
- ANTIPASSBACK VIOLATION
- ACCESS GRANT OR DENY FOR MULTIMAN CARD

**I/O Device Integration:** Option to configure IO interfaces (V-200 & V-300) to integrate with IO devices, such as

- ELEVATORS, HOOTERS, LIGHT INDICATORS AND OTHER OUTPUT DEVICES (V300).
- AC FAIL MONITOR, BATTERY FAIL MONITOR, ENCLOSURE TAMPER, AND OTHER INPUT DEVICES (V200).

**Fire Alarm Integration:** Option to Integrate with fire alarm panel to release the doors dedicated for fire exit.

**Multi Man Authentication:** Doors can be enabled with multi man authentication, it requires two or more cards to be authenticated to grant access, and it is optional whether to follow the card sequence or not.

**Elevator Integration:** Option to integrate with elevator control panel to grant or deny accessing the elevator.

**Host Application:** AccessSoft is available in windows desktop version. Modularized architecture eases implementation, maintenance and usage.

**Reports:** Reports module facilitates operator to generate sophisticated reports with various filter options. Following is the list of reports.

- EMPLOYEE DETAILS
- CARD DETAILS
- READER DETAILS
- FIRE ROLL CALL IN (EVACUATION LIST)
- FIRE ROLL CALL OUT (EVACUATED LIST)

# System Specification

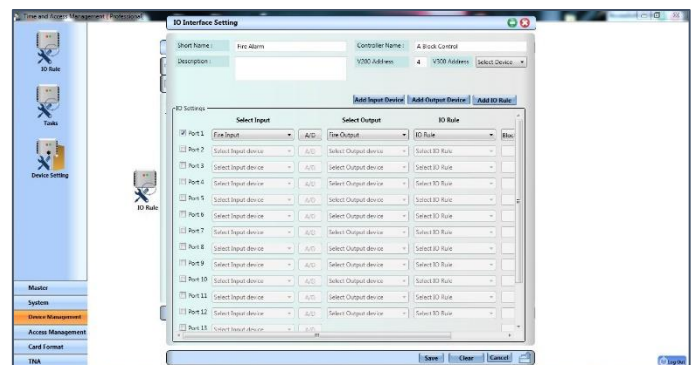
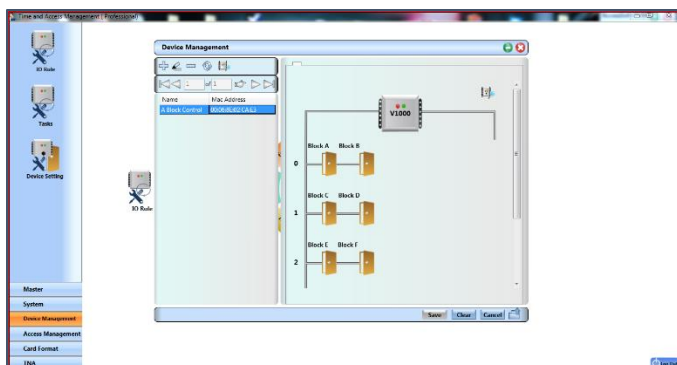
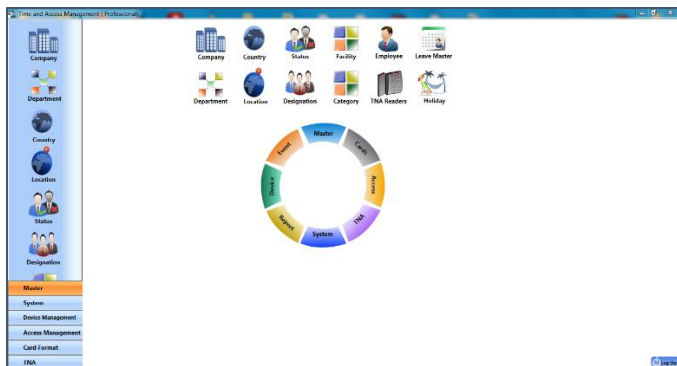
The host application is available in both windows desktop version and web version; both the versions use MS SQL as backend and C# .NET/C# ASP.NET as frontend respectively.

**Host License:** Standard Host application with 32 readers support

**Extended license:** Software Extended license to support additional readers, multiple of 32 readers for each extended license.

Prerequisites	Recommended	Minimum
Processor	2 GHZ	1 GHZ
RAM	4 GB	2 GB
OS	WIN-7 or Higher (32/64 bit)	WIN-XP-SP3
OS Server	WIN-2008 or Higher (32/64 bit)	WIN-2008
Database	MS-SQL-2008 or Higher (32/64 bit)	MS-SQL-2005
Disc Space	500-GB	40-GB

# AccessSoft Screen Shots





#### **MEA DISTRIBUTION OFFICE**

Office # M-05 | Bin Thani Building | Al Twar  
Al Qusais-2 | P.O. Box: 55370 | Dubai | U.A.E  
Tel: +971 4 268 5656  
E-mail: [sales@irizid.com](mailto:sales@irizid.com) | Web: [www.irizid.com](http://www.irizid.com)

#### **HEAD OFFICE**

**IRIZ ID TECHNOLOGIES**  
# 278 | 16<sup>th</sup> Cross | 2<sup>nd</sup> Block | R.T.Nagar  
Bangalore – 560032 | India  
Tel: +91 80 2355 0999 / 2354 5548